

Pyplok® Case Study: **Removal and Repair of Clogged Deck Drain Line**



SARAWAK SHELL BERHAD

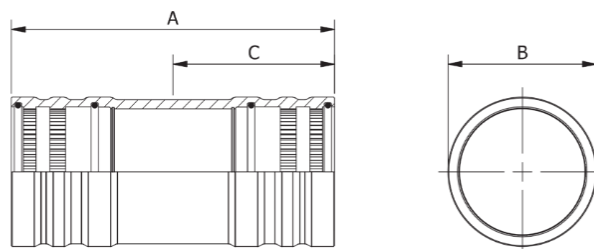
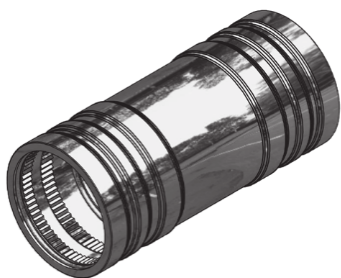


Location of the project : **Shell Sarawak Berhad– E11 Complex**

Scope of Work : **Removal and Replacement of Clogged E11P-A Deck Drain Lines and to install new Pyplok® fittings**

Piping Specs : **4”NPS Carbon Steel Line**

Pyplok Fitting Used : **4”NPS Carbon Steel Straight Coupling (DP40N100G64)**



Pyplok® DP40N100G64 3D Model and Drawing

1. Cutting the pipe



Identifying the pipe to be cut



Surface Preparation to bare Metal



Cutting the pipe with hack saw

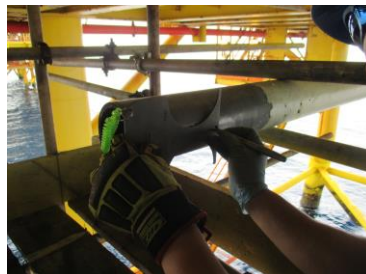
2. De-clogging the line



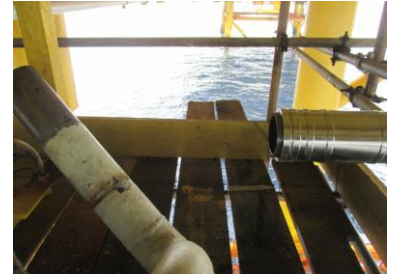
3. Pyplok® Installation-



Marking on the pipe



Marking on the pipe



Placing the Pyplok® Fitting



Crimping the Pyplok®



Crimping the Pyplok®



Swage Dia Inspection



Secondary Marking Inspection



View of the Installed Pylok® Fitting